

Directions to The Falkirk Wheel

With easy access from Glasgow and Edinburgh, the two airports, and the whole of Central Scotland, The Falkirk Wheel is a unique and highly memorable venue for any conference. Featuring a dramatic wall of glass offering impressive views, The Wheel sits in magnificent grounds with great views of the nearby Ochil Hills.

BY TRAIN AND BUS

Approximately 23 miles from both Glasgow and Edinburgh by train The Falkirk Wheel is accessible from either Falkirk Grahamston or Falkirk High Station. Families Outside will be providing a coach service to and from Falkirk High Station at the beginning and end of the conference, courtesy of Ratho Coaches.

There are also taxi ranks at both stations and it is a short ride to the Falkirk Wheel. Alternatively First Bus No 3 Red Line runs every 15 minutes from stops close to both stations.

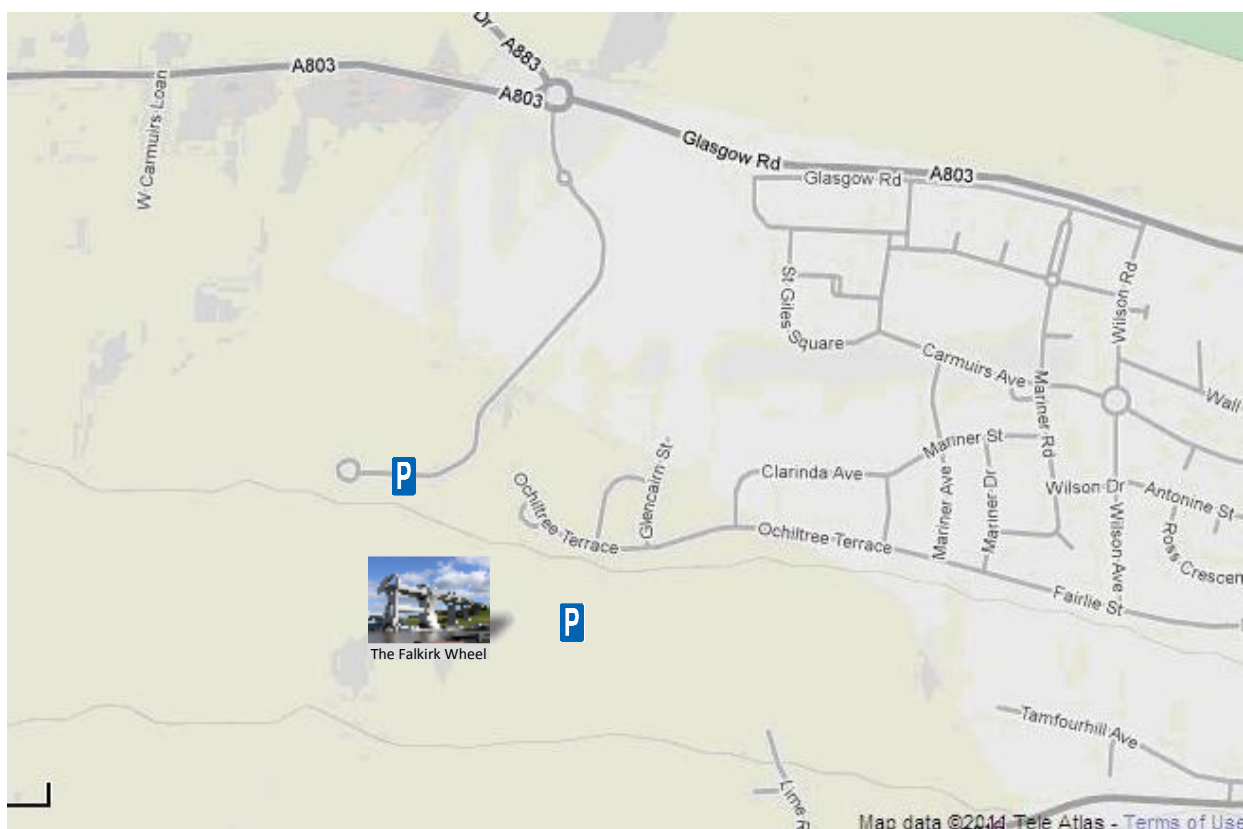
BY CAR

From Edinburgh – take the M9 west for Stirling. Exit at Junction 8 of the motorway, follow brown and white tourist signage for The Falkirk Wheel.

From Glasgow – from the M80/A80 follow signs for Falkirk and brown and white tourist signage for The Falkirk Wheel.

From the North – Follow the M9 south and take junction 9 (Stirling Services). At the large roundabout, take the fourth exit for The Falkirk Wheel and Denny (A872). Continue on, following the brown and white tourist signs.

For anyone using a satellite navigation system, the address is The Falkirk Wheel, Lime Road, Tamfourhill, FK1 4RS.



PARKING

The main car park is a 5 - 10 minute walk along the side of the canal with a slight incline. Those with walking difficulties or disabilities please follow the signs for The Falkirk Wheel & Services and the yellow AA signs for The Falkirk Wheel starting on the outskirts of Camelon.

Accommodation within the Falkirk area

<u>Hotel</u>	<u>Address</u>	<u>Telephone</u>	<u>Website</u>	<u>Rate Per Person</u>
Best Western Park Hotel	Camelon Road Falkirk FK1 5RY	0845 373 0830	www.bestwestern.co.uk	£54 per room per night
The Cladhan Hotel	Kemper Avenue Falkirk FK1 1UF	01324 627421	www.hotelcladhan.co.uk	£50 per room per night
The Graeme Hotel	40 Grahams Road Falkirk FK1 1HR	01324 628576	www.graemehotelfalkirk.co.uk	£35 per room per night
The Orchard Hotel	2 Kerse Lane Falkirk FK1 1RF	01324 625567	www.orchard-hotel.co.uk	£50 per room per night

All the hotels listed are located in the centre of Falkirk and are approximately a five minute taxi journey from the venue.

Prices were accurate at date of checking in June 2011 and may vary since this time.